

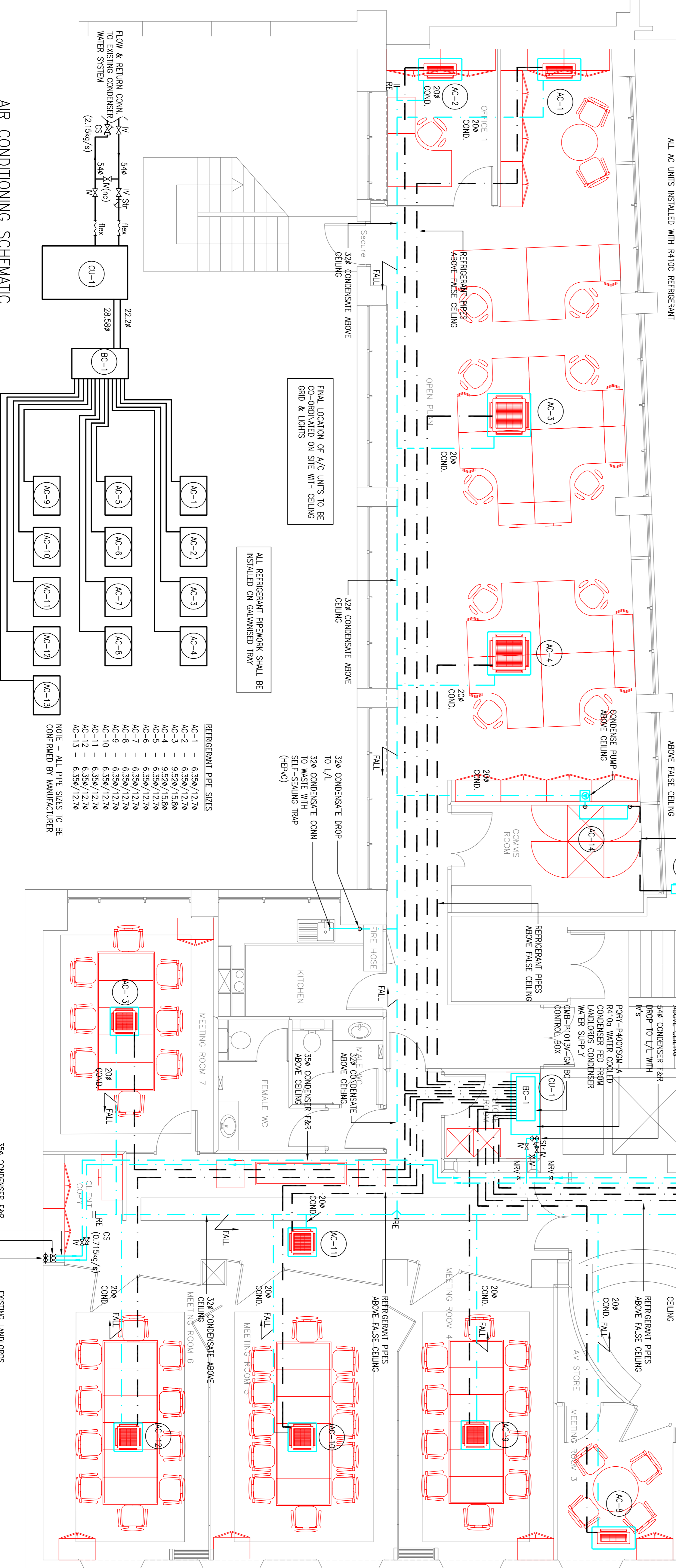
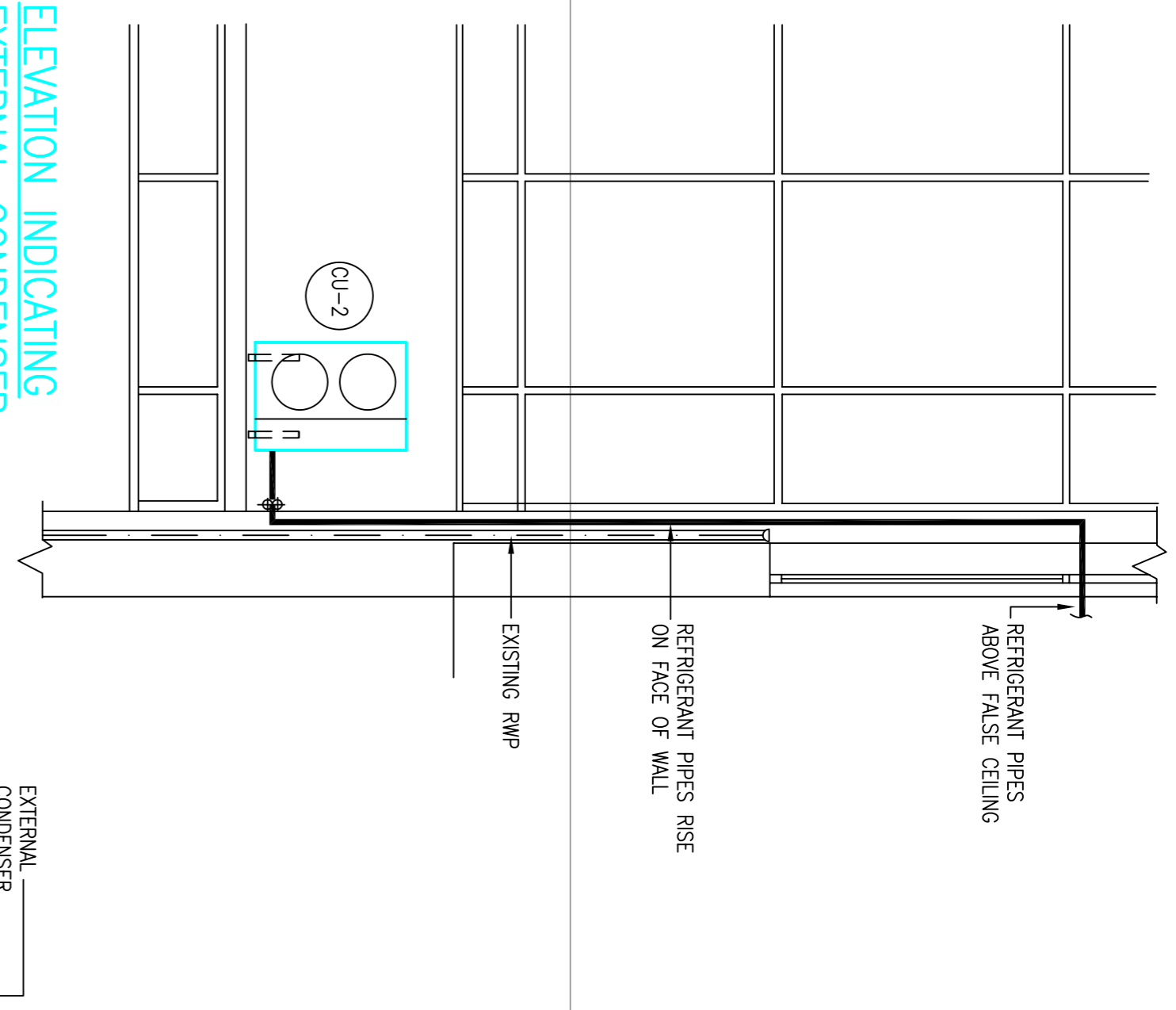
- NOTES
1. ALL DIMENSIONS IN MILLIMETRES
  2. THIS DRAWING SHALL NOT BE SCALED

AIR CONDITIONING UNIT SCHEDULE

REF	COOLING (kW)	HEATING (kW)	TYPE	WEIGHT (kg)	ELEC. DETAILS
AC-1	2.1	2.3	PMY-P200BM-E	14	220/1/50-0.2A
AC-2	2.1	2.3	PMY-P200BM-E	14	220/1/50-0.2A
AC-3	6.7	7.4	PMY-P63VM-E	24	220/1/50-0.8A
AC-4	6.7	7.4	PMY-P63VM-E	24	220/1/50-0.8A
AC-5	4.3	4.6	PMY-P40VM-E	17	220/1/50-0.3A
AC-6	2.1	2.3	PMY-P200BM-E	14	220/1/50-0.2A
AC-7	2.1	2.3	PMY-P200BM-E	14	220/1/50-0.2A
AC-8	2.1	2.3	PMY-P200BM-E	14	220/1/50-0.2A
AC-9	3.4	3.7	PMY-P32VM-E	17	220/1/50-0.3A
AC-10	3.4	3.7	PMY-P32VM-E	17	220/1/50-0.3A
AC-11	3.4	3.7	PMY-P32VM-E	17	220/1/50-0.3A
AC-12	3.4	3.7	PMY-P32VM-E	17	220/1/50-0.3A
AC-13	3.4	3.7	PMY-P32VM-E	17	220/1/50-0.3A
AC-14	7	-	PMY-P40VM-E +P0-P1000MA	28/121	220/1/50-1.45A
CU-2	-	-	PMY-P1013V-GA	57	220/1/50-1.1A
CU-1	45	50	PMY-P400TSM-A	440	415/3/50-17.5A

ALL AC EQUIPMENT MANUFACTURED BY MITSUBISHI ELECTRIC.  
ALL AC UNITS INSTALLED WITH R410C REFRIGERANT

ELEVATION INDICATING EXTERNAL CONDENSER



AIR CONDITIONING SCHEMATIC

REFRIGERANT PIPE SIZES

AC-1	6.35ø/12.7ø
AC-2	6.35ø/12.7ø
AC-3	9.52ø/15.8ø
AC-4	9.52ø/15.8ø
AC-5	6.35ø/12.7ø
AC-6	6.35ø/12.7ø
AC-7	6.35ø/12.7ø
AC-8	6.35ø/12.7ø
AC-9	6.35ø/12.7ø
AC-10	6.35ø/12.7ø
AC-11	6.35ø/12.7ø
AC-12	6.35ø/12.7ø
AC-13	6.35ø/12.7ø

NOTE - ALL PIPE SIZES TO BE CONFIRMED BY MANUFACTURER

CONDENSATE PIPE SIZES

AC-1	25mm
AC-2	25mm
AC-3	32mm
AC-4	32mm
AC-5	25mm
AC-6	25mm
AC-7	25mm
AC-8	25mm
AC-9	25mm
AC-10	25mm
AC-11	25mm
AC-12	25mm
AC-13	25mm

CONDENSER WATER PIPING

CU-1	50mm
CU-2	50mm

CONDENSATE TRAP SIZES

AC-1	25mm
AC-2	25mm
AC-3	32mm
AC-4	32mm
AC-5	25mm
AC-6	25mm
AC-7	25mm
AC-8	25mm
AC-9	25mm
AC-10	25mm
AC-11	25mm
AC-12	25mm
AC-13	25mm

CONDENSER WATER RISER SIZES

CU-1	50mm
CU-2	50mm

CONDENSER WATER TRAP SIZES

CU-1	50mm
CU-2	50mm

CONDENSER WATER TRAP SIZES

CU-1	50mm
CU-2	50mm

Client: PACIFIC INTERIORS

Job Title: 17 HANOVER SQUARE LONDON W1

Drawing Title: FIRST FLOOR PROPOSED AIR CONDITIONING SERVICES LAYOUT

Scale: 1:50 Date: DEC. 2005

Designed by: HC Drawn by: HC Checked by: Approved by:

Autocad file ref: Drawing No: NS297/ML/01 Rev: 4

Environmental Air Services Ltd. Vector House Merle Common Road Surrey RH8 0RP Tel: 01883 717220 Email: mike@sas.com.uk

FOR CONSTRUCTION

REF	AMENDMENT	DATE
4	AC CONDENSER SECTION ADDED	23 FEB.06
3	CONDENSER WATER CONNS. ADDED	02 FEB.06